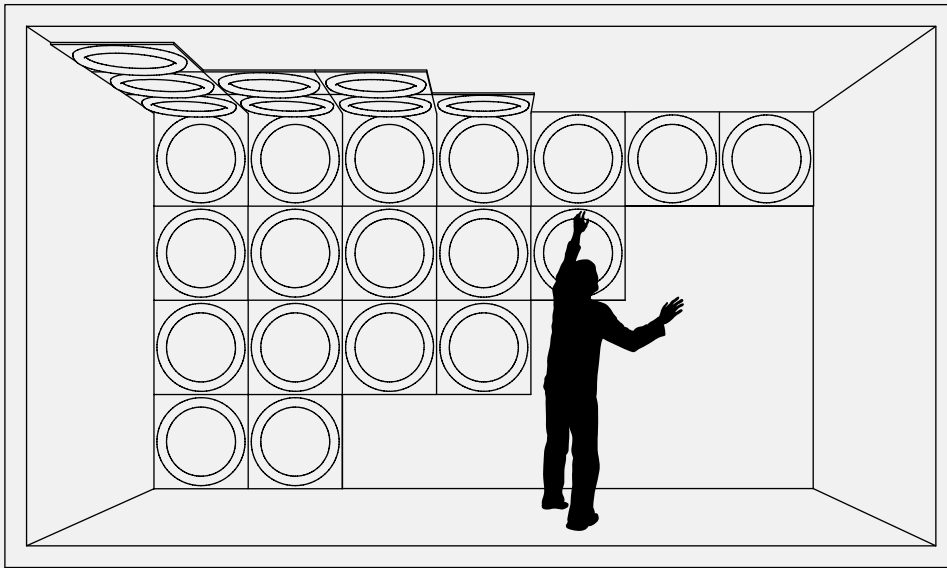
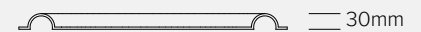
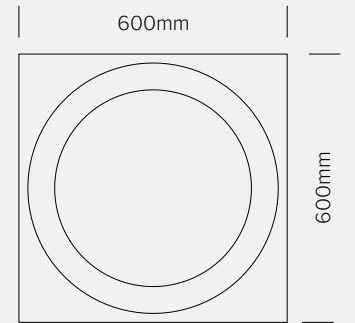
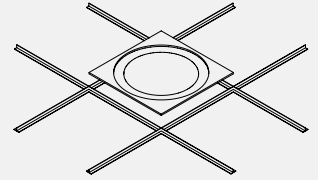


BALANCE

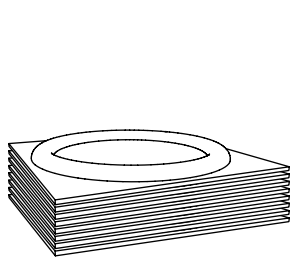
3D Acoustic Felt Wall & Ceiling Tiles

**T4 Suspended Ceiling
Panel Compatible**



SIMPLE, MODERN, VERSATILE + GOOF-PROOF INSTALLATION

TOOLS + SUPPLIES NEEDED

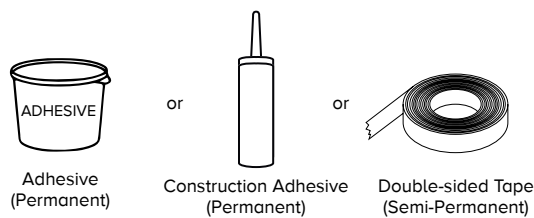


600 x 600 x 30 mm
8 Piece Acoustic Tiles

Prepare installation surface by cleaning it thoroughly and making sure it is flat and even.

32 Piece Adhesive Strips (shipped upon request)

ADHESIVE OPTIONS

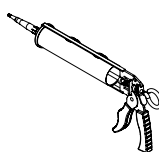


ADHESIVE
(Permanent)

or
Construction Adhesive
(Permanent)

or
Double-sided Tape
(Semi-Permanent)

APPLY ADHESIVE

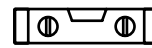


Caulk Gun

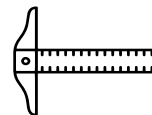


Adhesive Spreader

OTHER TOOLS



Level

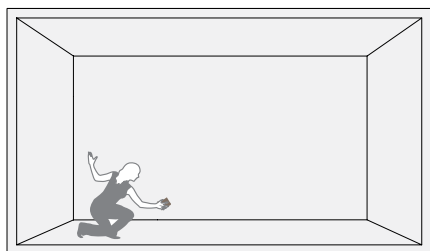


Ruler Straight Edge/
Tape measure



Utility Knife

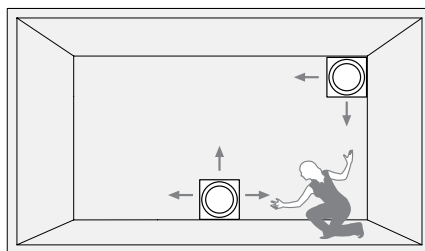
1. PREPARATION



Install over primed or painted drywall or plywood. Surface must be clean, smooth, dry, free of waxes and existing adhesive, dirt, dust, grease, oil, paint curing compound or sealers.

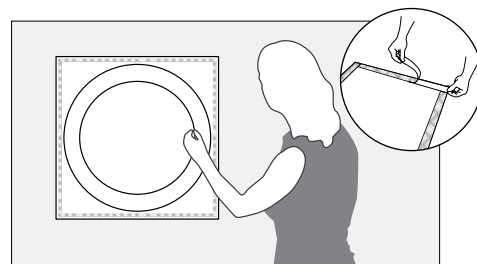
NOTE: Tape cannot be used over chemically cleaned substrates or raw plywood. If using tape on a painted surface, test first, some paints may require the wall to have a coat of bonding primer first.

2. PLANNING



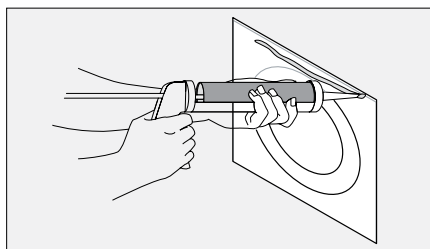
Will your install be wall-to-wall, a floating design, a strip of panels, etc? Plan the layout on the floor or sketch it out. Use a level to mark straight lines. Allow cut panels to fall in more inconspicuous areas like corners and bottoms. If working from the center out, all panel edges may need to be cut. Plan well to ensure desired results. **Remember, measure twice and cut once.**

3. SEMI-PERMANENT ADHESIVE



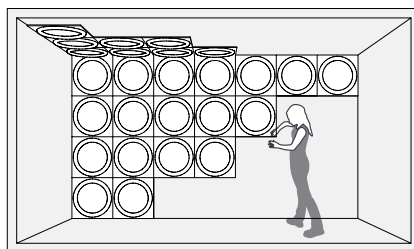
Double-sided Tape Installation
Tape, apply the tape to the perimeter plus strips across the panel on the touchpoints. Each corner should be covered. Press tape firmly to the panel. Peel backing off and adhere with pressure.

4. PERMANENT ADHESIVE



Installing with Construction Adhesive, apply a thin bead of adhesive to the perimeter of the panel and smooth out with an adhesive spreader so adhesive doesn't seep out when pressed to the wall. Also apply a small amount on touch points in the center of the panel. Follow manufacturer's recommendations on dry times.

5. INSTALLATION



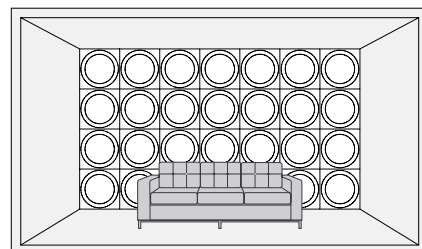
FINAL PRESSURE (Both Methods)

Once in place, secure using hands or a squeegee around the perimeter of the panel and other touchpoints to lock in place.

TIPS FOR MANUAL CUTTING PANELS

When cutting Felt Tiles manually we recommend using a sharp knife combined with a ruler for the best possible result. A utility knife or precision knife will be sufficient.

6. ENJOY



Now enjoy your transformed wall and acoustics.